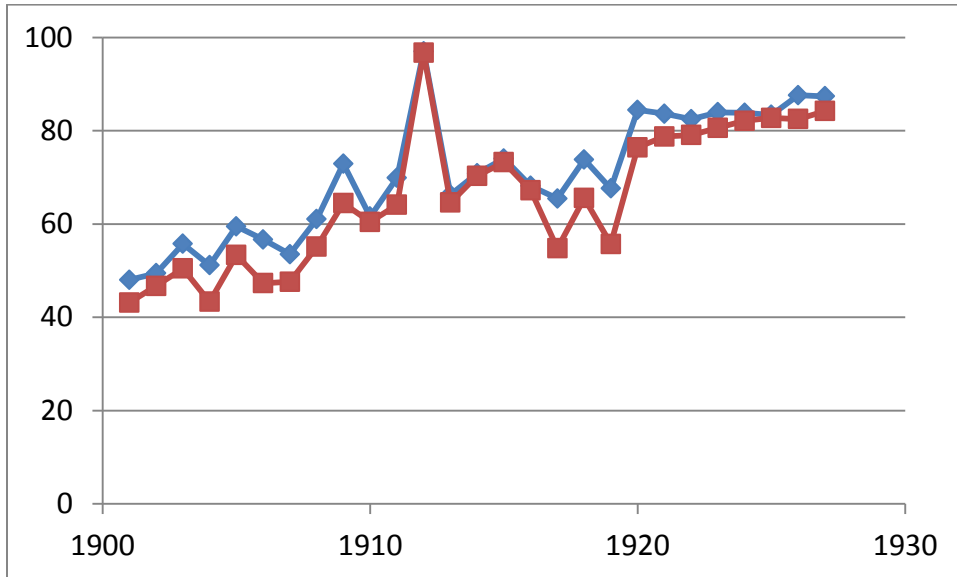


President's Report
Retrosheet Board meeting
June 20, 2020

- Proofing of 1916, 1917, and 1918 event files has been completed and these will be in the upcoming release. This gives us event files for the past 104 seasons.
- Inputting: Tom Thress, Rob Wood, Dick Cramer, Jim Herdman, Mark Pankin, Cliff Blau, Wayne Townsend and Doug Burks
- Deducing: Tom Thress, Rob Wood, Dick Cramer, Jim Herdman, Mark Pankin and Javier Anderson. We have completed 1933, 1932, 1931, 1930, 1929 and 1928 which will all be in our upcoming release, giving us the last 92 seasons with all games.
- The deductions require newspaper accounts and we have had huge help in downloads from newspapers.com by Cliff Blau, Rob Wood, Jim Herdman and Tom Thress. Jim Bard has recently joined this effort and is very efficient, freeing others for higher level work.
- Tom Ruane has continued constructing box score files and these are now complete back to 1901 which will be in our upcoming release. He has had help from several people in checking out RBI data among other things. Dave Lamoureux, Jonathan Frankel, Javier Anderson, Mike Grahek, Tom Bradley, Bill Nowlin, Tom Stillman, Gary Pearce, Rob Wood, J.G. Preston, Pete Palmer, Herm Krabbenhoft, Don Zminda, Charlie O'Reilly, Paul Wendt, Sheldon Miller, Bob Boehme, Chuck Hildebrandt, Mark Armour, Ron Weaver, Bob LeMoine, Ian Orr, Terry Small, Dave Newman and Dixie Tourangeau.
- Game account acquisitions: Joe Stillwell still prowls eBay and auction websites, getting us anywhere from three to ten games per week. Luke Kraemer has continued to collect scorebooks which he graciously copies for us. Mark Pankin fields many of the email messages offering accounts and in particular Mike Cantor has done extraordinary work with newspapers.com to find pbp accounts from 1906-1936, many of which are complete.
- Rob Wood has undertaken three major projects in addition to deducing and downloading.
 - Cleaning up our ejection file by proofing details. This information is now much better than before and he has added over 100 ejections to our master file.
 - Comprehensive sweep through the event files to get proper day/night indication for each game,
 - Researching time of game and attendance. So far he is back to 1930 and our files are now vastly improved in these areas.
- We have many games in event files for which better information has become available, both scorecards and newspaper accounts. Wayne Townsend has taken on the task of examining the existing files in light of the new data and improved the accounts of over 100 games from 1945 – 1965. His work continues with 1944 in Retro-fashion.
- I have added the details for an additional 300 ejections to our master file by systematically checking unproofed event files prior to 1920. This is the topic of my SABR presentation next month and when that is done, I will work with Mark to get our entire file available on our site for downloading.
- Summary graph of our current holdings and input games appears below, compared to last year.

Percentage of game accounts on hand and entered, 1901-1927 (33960 played, 23975 on hand, 22422 entered). Data as of 06-17-2020



Percentage of game accounts on hand and entered, 1901-1933 (41349 played, 30363 on hand, 28559 entered). Data as of 06-01-2019.

